

PKOS has added the ability to import your own custom images to be used with some of the screensaver options available within the Desktop applet. These instructions will show you how to import the pictures into your unit and how to set the screensaver options that work with the custom pictures.

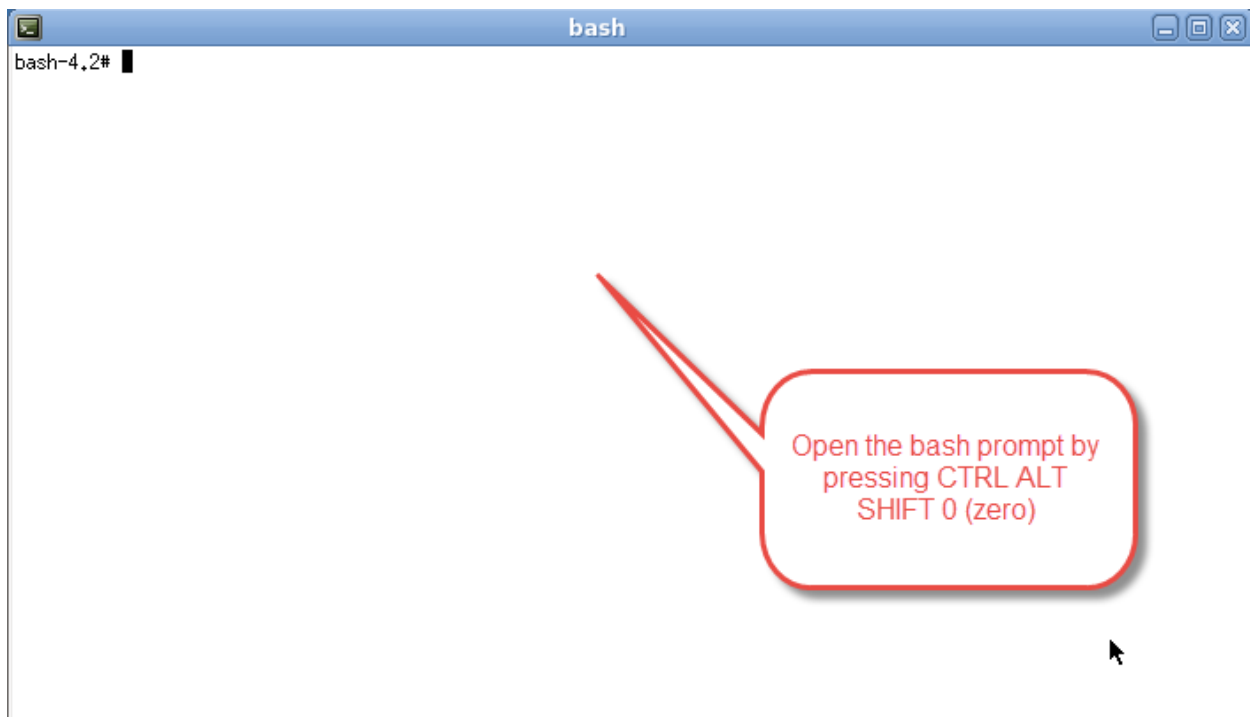
You will need a thumb drive to import your pictures into the unit. Please ensure the USB drive is formatted as FAT32 or NTFS. For simplicity, it is recommended to place the pictures on the root of the thumb drive.

The instructions in this document include entering commands in the bash prompt. Command lines are noted with *italic* text. Actions, such as pressing the enter key after a command line is written, will be **bolded**.

To be able to show images:

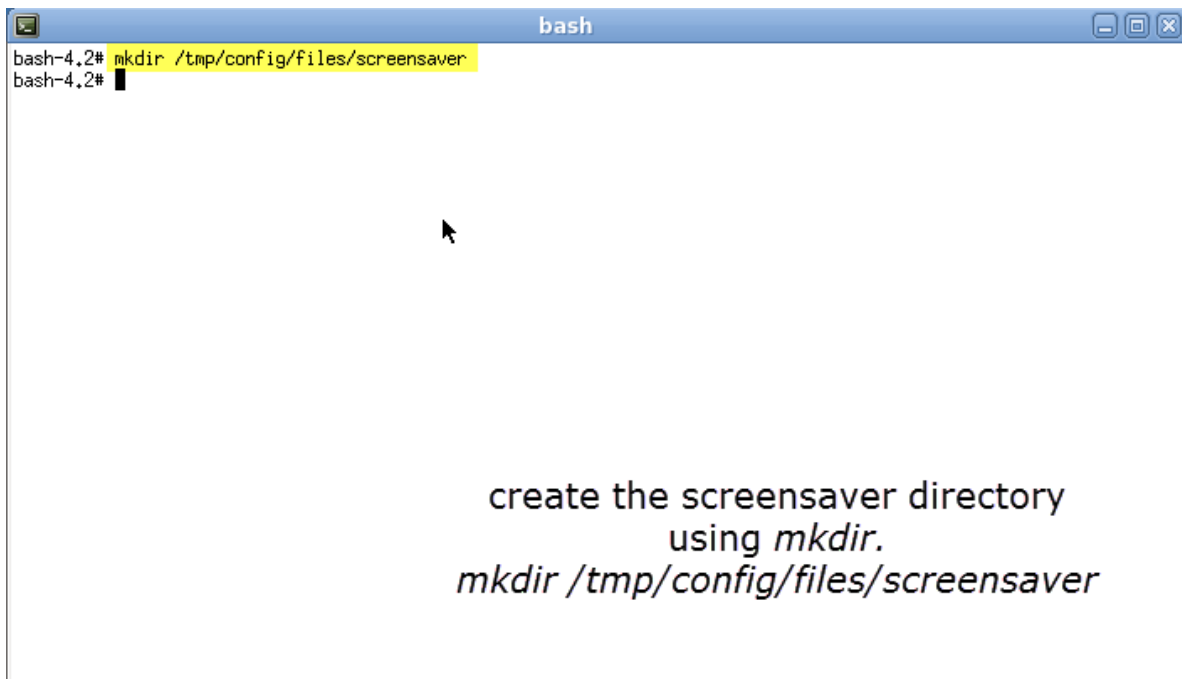
- Create the /tmp/config/files/screensaver directory
- Copy the image files into that directory
- Issue the freeze command
- Reboot the thin client.

To start, we will need to access the bash prompt by pressing **CTRL ALT SHIFT 0** (zero) on your keyboard.



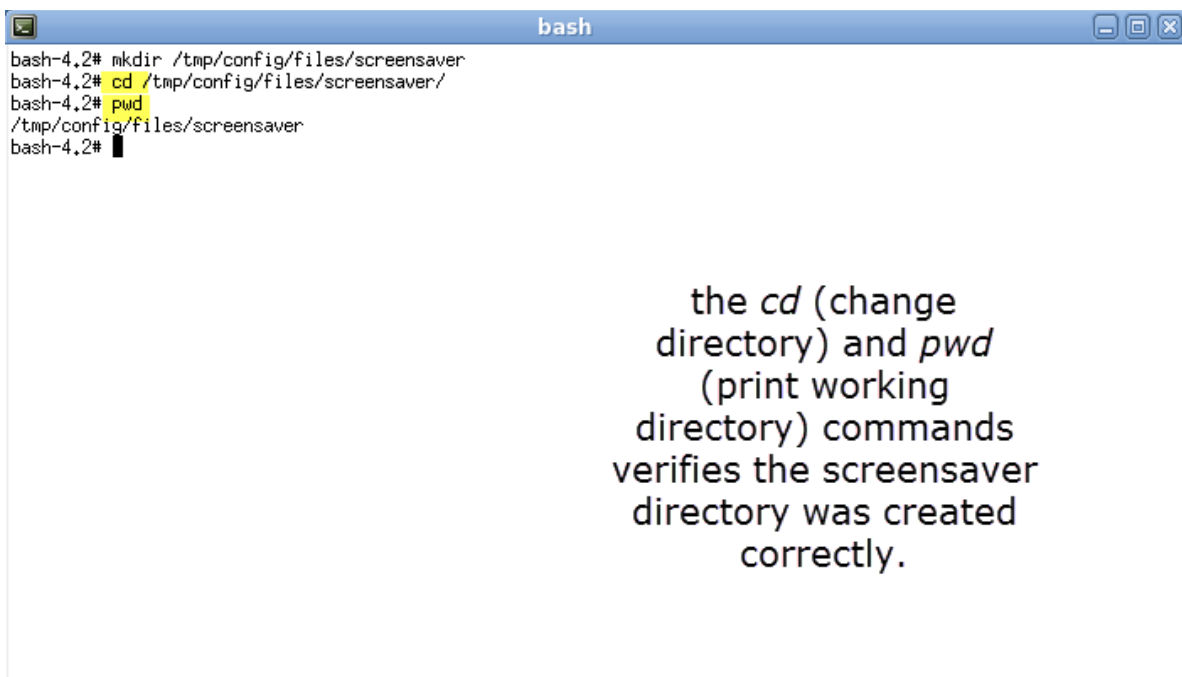
With the bash prompt open – we are going to create the **screensaver** directory in `/tmp/config/files`.

Enter the following command: `mkdir /tmp/config/files/screensaver`
Press **enter** to create the directory.



```
bash
bash-4.2# mkdir /tmp/config/files/screensaver
bash-4.2#
```

create the screensaver directory
using *mkdir*.
mkdir /tmp/config/files/screensaver



```
bash
bash-4.2# mkdir /tmp/config/files/screensaver
bash-4.2# cd /tmp/config/files/screensaver/
bash-4.2# pwd
/tmp/config/files/screensaver
bash-4.2#
```

the *cd* (change
directory) and *pwd*
(print working
directory) commands
verifies the screensaver
directory was created
correctly.

Plug your thumb drive into the unit, if you haven't done so already. Once the thumb drive is plugged in, verify the unit sees the drive as well as the images on the root by running the command: `ls /media/sdb1` **enter**.

After verifying the unit sees your drive and the image files, we are going to copy the images to the screensaver directory we just created.

Note: command lines and file names are case sensitive. If you are copying a single file you will need to know the full file name. entering part of the file name and pressing **tab** will auto complete it for you, if, no other files or directories resemble the part of the name that has already been typed. If you are copying multiple files that all have the same extension you can use the `*` as a wild card (see screenshot below). Or if there is nothing else on the USB drive except for the image files and there are varying extensions to each, then you can copy them over by doing a wildcard on each side (`*.*`).

Command: `cp /media/sdb1/imagefilename.jpg /tmp/config/files/screensaver` **enter**

Note: if you did the change directory then you can replace `/tmp/config/files/screensaver` with a period (`.`)

Command: `cp /media/sdb1/imagefilename.jpg .` **enter**



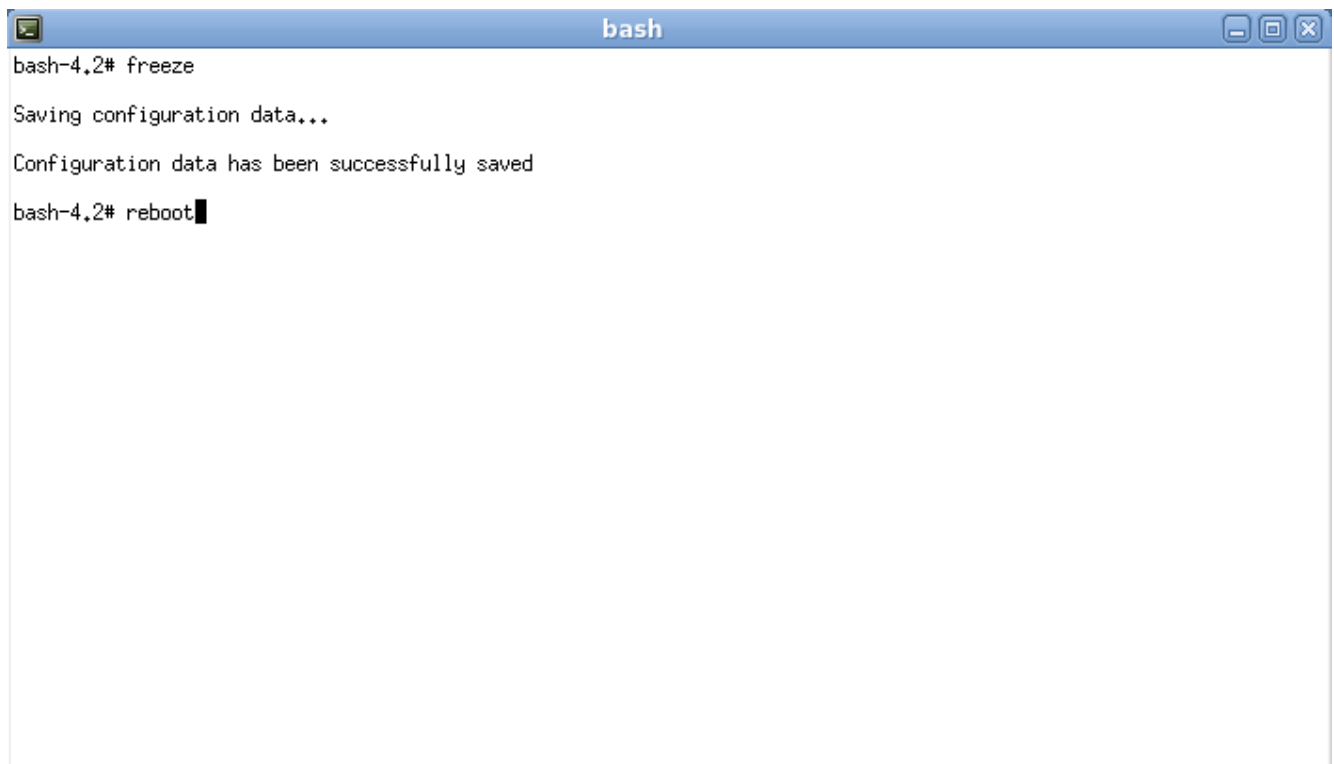
```
bash
bash-4.2# mkdir /tmp/config/files/screensaver
bash-4.2# cd /tmp/config/files/screensaver/
bash-4.2# pwd
/tmp/config/files/screensaver
bash-4.2# cp /media/sdb1/*.jpg .
bash-4.2# ls
10ZiG_1920x1080.jpg 10ZiG_LaunchPadCitrix.jpg Z9RFP.jpg desktopimage3.jpg v5Z5GYi.jpg xj1z2.jpg
bash-4.2#
```

copy the image files to the screensaver directory by using the `cp` command. use `ls` to verify the files were copied correctly.

Now that the screensaver directory is created and the image files that you want to use for your screensaver are copied to that directory, we want to save the configuration and reboot the unit.

Ensure you have closed any active connections before continuing.

Command: *freeze* **enter** *reboot* **enter**

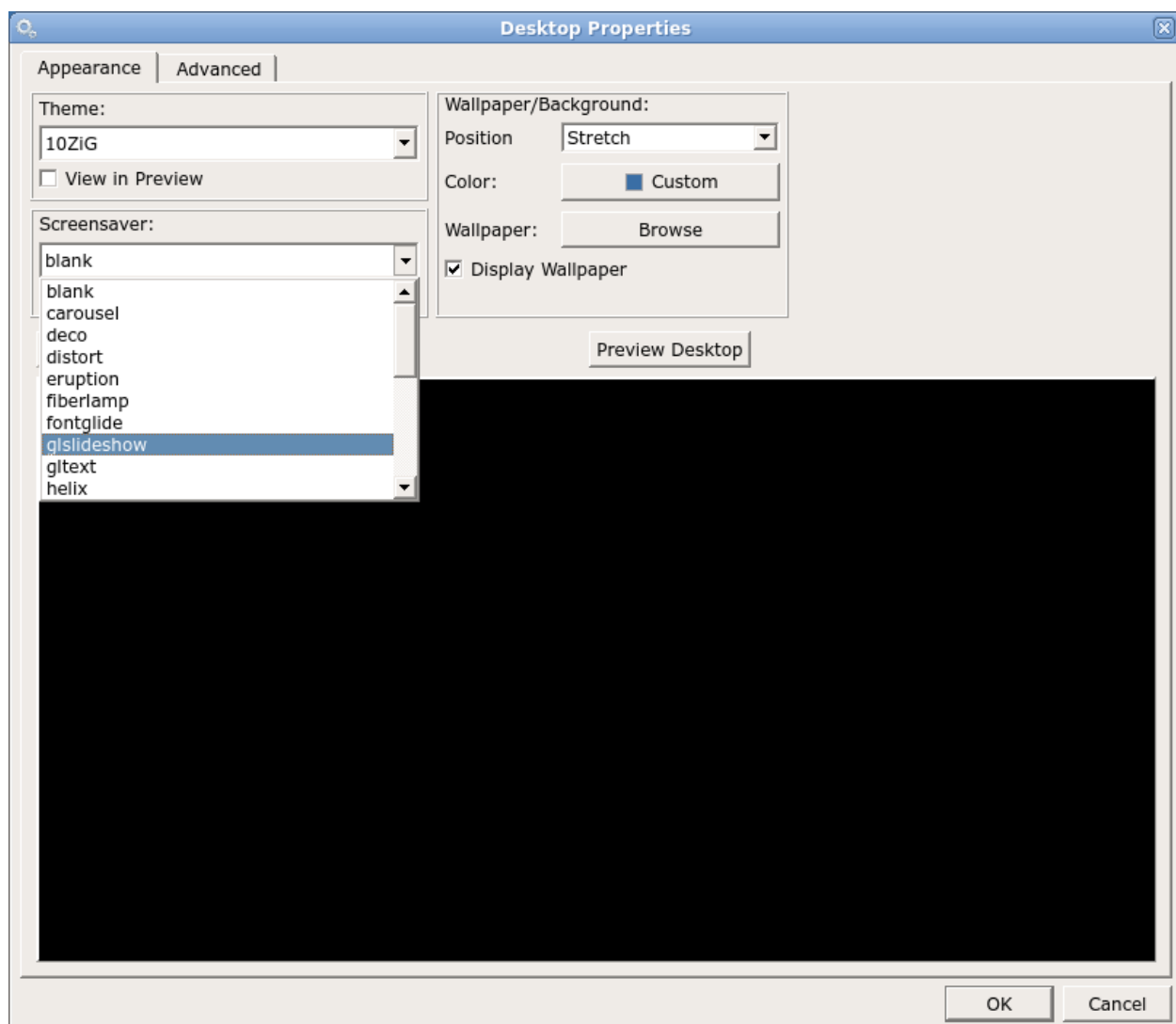
A terminal window titled 'bash' with standard window controls (minimize, maximize, close) in the top right corner. The terminal output shows the following sequence of commands and responses:

```
bash-4.2# freeze
Saving configuration data...
Configuration data has been successfully saved
bash-4.2# reboot
```

After the unit has been rebooted, go to the Desktop applet within Terminal Properties. Enable the screensaver option by selecting a screensaver option. Optionally, you can set a password when coming out of the screensaver with the Use Password option.

The following options will now be listed for you to use with your custom screensaver images:

Carousel, distort, glideshow, ripples, spotlight, and twang.



Select the screensaver option you would like to use. Once you have selected an option, press OK at the bottom right of the window. Reboot the unit one last time to update all the files and settings within your firmware.

Please note: once you have selected a screensaver option that works with the imported image, the unit **MUST** be rebooted to associate the image files correctly with the screensaver options.

These settings will be carried over when generating a template from the 10ZiG Manager.

You can active the screensaver, manually, by pressing **CTRL ALT ESC**